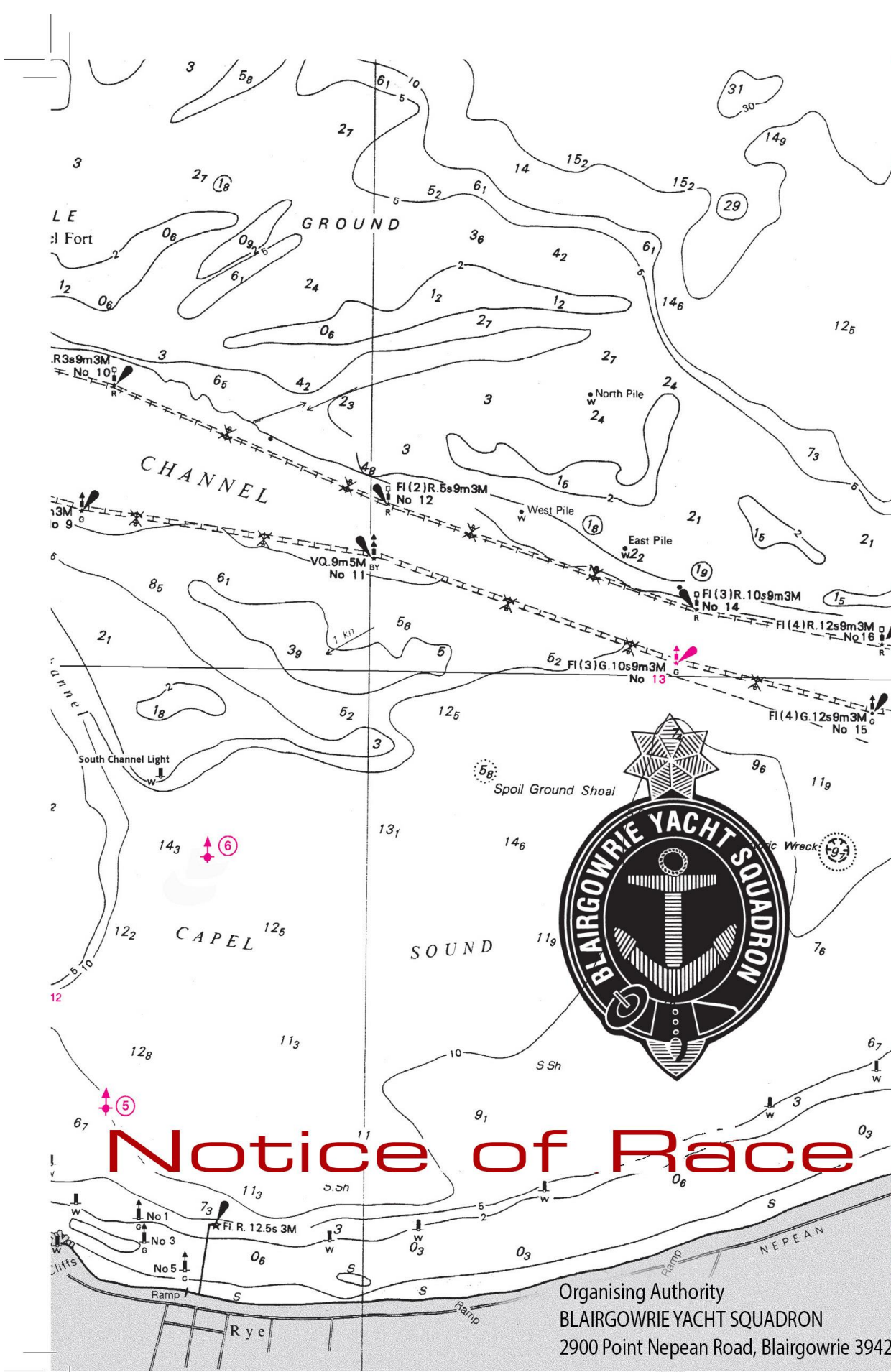


2020 - 2021



# Notice of Race

Organising Authority  
BLAIRGOWRIE YACHT SQUADRON  
2900 Point Nepean Road, Blairgowrie 3942 Victoria

*The notation '(DP)' in a rule in the NoR or SI means that the penalty for a breach of that rule may, at the discretion of the protest committee, be less than disqualification.*

## **1 RULES**

- 1.1 The 2020/21 season will be governed by the rules as defined in *The Racing Rules of Sailing (RRS)*, Prescriptions and Special Regulations of Australian Sailing (AS) and BYS Sailing Instructions (SI).
- 1.2 All boats shall comply with the requirements of the State Legislation and local authorities, particularly with respect to the avoidance of commercial shipping.
- 1.3 The International Rules for Prevention of Collision at Sea, 1976, apply in all races between sunset and sunrise replacing the relevant parts of Rules Part 2.
- 1.4 Keelboats - The prescriptions and special regulations of Australian Sailing (AS) Part 1 Category 6 will apply.
- 1.5 In addition to the requirements of Safety Category 6, the follow additions apply to all keelboats:
  - a) While racing, no anchors shall be carried on deck forward of the bow or with any part protruding outboard.
  - b) All keelboats shall carry a VHF radio, and maintain a listening watch on 71 (or 82 for long races), unless otherwise advised, and on standby for distress on VHF 16. The radio may be permanently installed or a waterproof handheld.
- 1.6 All crew on deck competing under the following conditions shall wear a lifejacket:
  - i. Keelboats entered as Two-Handed – lifejacket must comply with AS Special Regulations Part 1, Section 3.12 (minimum 50)
  - ii. Keelboats competing as Cat 6 on a boat without lifelines complying with AS Special Regulations Part 1, Section 3.12 (e.g. Adams 10's) - lifejacket must comply with AS Special Regulations Part 2, Section 5.01.2 (minimum 50S).
- 1.7 Off the Beach Boats - The prescriptions and special regulations of Australian Sailing (AS) Part 2 will apply.
- 1.8 Boats competing in Two Handed races shall have only two persons on board. No extras allowed.
- 1.9 For the Ladies Skippers Race all boats must be helmed by a female. The Ladies Skipper race is a no extras (NS) race.

## **2 ADVERTISING**

- 2.1 Boats may be required to display advertising chosen and supplied by the organising authority.

## **3 ELIGIBILITY AND ENTRY**

- 3.1 Entry is open to any boat on the register of BYS or any other organisations affiliated with Australian Sailing.
- 3.2 Eligible boats may enter by submitting an online entry at [www.bys.asn.au](http://www.bys.asn.au) at least 60 minutes prior the scheduled start time.
- 3.3 Keelboats – A YA Special Regulation's Part 2 Audit Form, Crew List, and Certificate of Insurance shall be submitted to the Sailing Office prior to the yacht's first race of the season.

Off the Beach Boats – A Certificate of Insurance must be submitted to the Sailing Office prior to the yacht's first race of the season.

A boat that fails to comply with NoR 3.3 may be scored DNE.

- 3.4 A boat's insurance must be valid for each race.
- 3.5 Skippers and crews shall be a current financial BYS Member or a member of a club where reciprocal rights apply or have purchased a Sail Pass. Social and Non-Members of BYS may enter a maximum of four (4) races as a crew per BYS membership year. It shall be the responsibility of the person in charge of the boat to ensure that all crew on board for each race comply with these rules.
- 3.6 A visiting boat may enter by submitting an entry form and Certificate of Insurance and lodging these with the Sailing Office at least 60 minutes prior to the warning signal.
- 3.7 Late entries may be accepted at the discretion of the race committee.

#### **4 FEES**

- 4.1 Required fees are as follows:

<i>BYS Members</i>	<i>No Fee</i>
<i>Visiting yacht</i>	<i>\$15.00 per race</i>

#### **5 SCHEDULE**

- 5.1 The schedule of races will be published on the BYS website from time to time.
- 5.2 The scheduled time of the warning signal each day will also be published from time to time

#### **6 MEASUREMENT**

- 6.1 ORC Club Division- To be scored on ORC Club handicap a boat shall produce a valid rating certificate prior to the first race of the season.
- 6.2 A boat with a valid ORC Club certificate at the start of a series shall be deemed to be racing with that rating for the whole of the series.
- 6.3 A boat may opt out of ORC Club for a series by advising the Sailing Committee in writing prior to the first race of that series
- 6.4 A boat competing in a class event, shall upon request produce a valid and current measurement certificate for that class.

#### **7 SAILING INSTRUCTIONS**

- 7.1 The sailing instructions will be available on [www.bys.asn.au](http://www.bys.asn.au) after 1 November 2020. A copy may also be collected from the Sailing Office.

#### **8 VENUE**

- 8.1 All races will be held in Port Phillip on the waters in the vicinity of Blairgowrie Yacht Squadron.

#### **9 THE COURSES**

- 9.1 The courses to be sailed will be listed in Appendix A, B and C of the Sailing Instructions.

#### **10 SCORING**

- 10.1 (a) To constitute a series at least four boats must have been racing in the series.  
(b) To constitute an Aggregate series, at least four races need to have been completed and at least four boats must have been racing in the series.

- 10.2 (a) When fewer than 4 races have been completed, a boat's series score will be the total of her race scores.  
(b) When from four to seven races have been completed, a boat's series score will be the total of her race scores excluding her worst score.  
(c) When eight to eleven races have been completed, a boat's series score will be the total of her race scores excluding her two worst scores.  
(d) When twelve or more races have been completed, a boat's series score will be the total of her race scores excluding her three worst scores.

## **11 RADIO COMMUNICATION**

- 11.1 Except in an emergency, a boat that is racing shall not make voice or data transmissions and shall not receive voice or data communication that is not available to all boats (DP).

## **12 GALE WARNING**

- 12.1 If a gale warning for Port Phillip is issued by the Bureau of Meteorology at 9am on any race day all sailing shall be abandoned. Refer to the Sailing Instructions clauses 33.1, 33.2, and 33.3. A Notice to Competitors will be published.

## **13 DISCLAIMER OF LIABILITY**

- 13.1 Competitors participate in BYS Club Races entirely at their own risk. See rule 4, Decision to Race. Competitors are responsible for the seaworthiness of a boat whose entry is accepted and for the sufficiency and adequacy of its equipment. Neither BYS, their servants and volunteers shall accept liability or responsibility whatsoever for death or any personal or material injury or damage sustained by a participant before, during or after a race or series of races.

## **14 INSURANCE**

- 14.1 Each participating boat shall be insured with valid third-party liability insurance with a minimum cover of \$10,000,000 per incident or the equivalent.

## **15 ROSTERED DUTY AND AVERAGE POINTS**

- 15.1 Crew rostered for duty on a BYS Roster shall be ineligible to enter for a race unless appropriate volunteer substitutions have been made prior to the race. Penalty of DNC shall be applied to any boat on which rostered crew have sailed.
- 15.2 A yacht that does not race because the majority of its crew are rostered for duty on a race day AND also fills out the form stating 'DUTY' shall be awarded points equal to the average of all of the points awarded in the series excluding discarded races allowed by the scoring system.
- 15.3 In any one season average points may be awarded for a maximum of two (2) race days.
- 15.4 A yacht competing in a major event for that class (such as a state, national championships or a major event) may be awarded average points equal to the average of the best three of the points awarded in the series. Skippers must apply prior to the event in writing to the BYS Sailing Committee.

## **16 HANDICAPS**

- 16.1 All handicaps will be set by the BYS Handicap Committee. Changes to a yacht's sailing configuration or equipment shall be advised to the Sailing Office prior to her next race.
- 16.2 For boats with an ORC Club Rating competing in the Two Hander Series, their Two Hander ORC Club Handicap shall be used.

16.3 Handicaps set by the BYS Handicap Committee shall not be grounds for a request for redress. This changes RRS 60.1(b)

**17 DIVISIONS**

17.1 There will be one Division for the Keelboat Series

**18 MEDIA RIGHTS**

18.1 By participating in these races, competitors automatically grant to Blairgowrie Yacht Squadron and its sponsors, the right in perpetuity to make, use and show, from time to time at their discretion, any photographs, motion pictures and live, taped or filmed television and other reproductions of the competitor during the period of the races without compensation

**19 FURTHER INFORMATION**

19.1 For further information please contact the BYS Sailing Office on 03 5925 9600 or via email: [sailing@bys.asn.au](mailto:sailing@bys.asn.au)